

ENG Operating instructions for PIR sensor Solight WPIR01



Dear customer, we would like to thank you for purchasing our product. To make the product serve you safely and to your full satisfaction, please read and follow the instructions below. This will prevent misuse or damage to the product. Avoid improper handling of the device and always follow the general principles of using electrical appliances. The product is intended for household or indoor use. Do not expose the product to extremely high humidity, avoid contact with liquids. Keep the operating instructions.

Specification

Power source: 220-240 V/AC

Charging frequency: 50/60 Hz

Ambient light intensity: <10-2000 lux (adjustable)

Time delay: Min. 10 s ± 3 s

Max. 7 min ± 2 min

Rated load: Max. 1200 W – bulb

300 W – LED light

Detection range: 160 °

Detection distance: 9m max. (< 24 °C)

Operating temperature: -20 up to +40 °C

Operating humidity: < 93 %

Power consumption: approx. 0,5 W

Mounting height: 1-1,8 m

Detection speed: 0,6-1,5 m/s



Mounting position

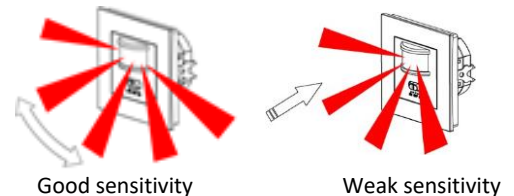
Use the following guidelines to determine the installation position:

- Do not point the detector at objects with highly reflective surfaces, such as mirrors, etc.
- Do not place the detector near heat sources such as heating fans, air conditioners, lamps, etc.
- Do not point the detector at objects that may be moved by the wind, such as curtains, tall plants, etc.

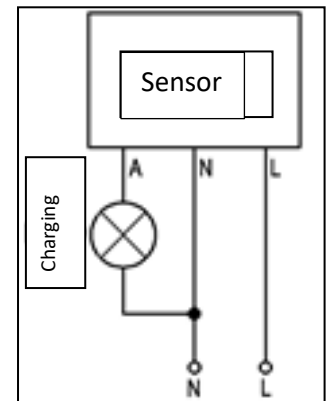
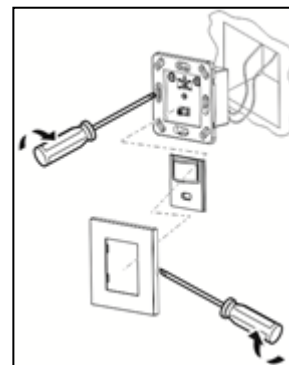
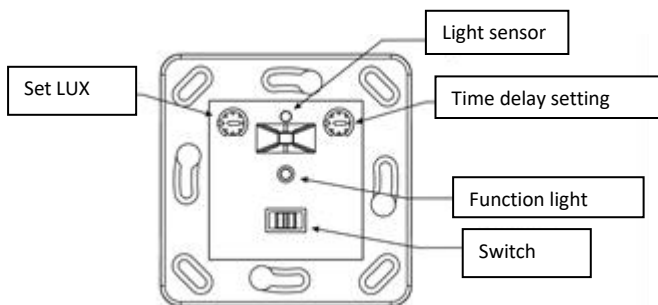
Observe the detection angles shown in the following sketches:

Installation

Installation may only be carried out by qualified personnel! Switch off the power supply before installation!



1. Take off the sensor front plate and set the regulators *Time (Time)* and *Lux (Light)*.
2. Connect the input cable to the terminal block according to the diagram below.
3. If you want to place the sensor in a circular hole, insert it into the hole and tighten the spacer screws on both sides. If you want to install the sensor in a square hole, insert it into the hole and tighten the fixing screw through the mounting hole.
4. Put the sensor front plate back on and turn on the power.



Testing and setting

1. Set the function switch to the *ON* position. Turn the Time control counterclockwise to the minimum (-). Turn the Lux control clockwise to maximum (SUN).
2. Turn on the power. The light should turn on. If you set the function switch to the OFF position, the light will turn off immediately.
3. Set the function switch to the PIR position. It takes about 30 seconds to start and activate the sensor. If the sensor receives an induction signal, it turns on the light. The time delay gradually increases: If the sensor receives another induction signal, the time delay count starts again. If the signal goes out, the bulb goes out after 10 s ± 3 s.
4. Adjust the Time and Lux controls as needed.

Notes

- If you are performing daylight testing, turn the Lux control to the maximum position (SUN), otherwise the sensor will not turn on the light.
- If the light source is stronger than 60 W, the distance between the sensor and the light source should be at least 60 cm.

Manufacturer: Solight Holding, s.r.o., Na Brně 1972, Hradec Králové 500 06